



## **LWM BALANCED POSITIVE IMPACT PORTFOLIO - AUG 14**

---

Prepared date: 17/10/2023

# LWM Balanced Positive Impact Portfolio - Aug 14 Diversification Benefit Report

Diversification benefit is an indication to what extent the risk of a portfolio has been reduced by the interaction effect of the investments held.

## Portfolio Holdings

Portfolio Holdings	% Weight	FE fundinfo Risk Score
Ecofin Advisors Limited - Ecofin Global Utilities and Infrastructure Trust Plc ORD 1P	8.00	160
FTGF - ClearBridge US Equity Sustainability Leaders S Acc GBP	6.00	131
Greencoat Capital LLP - Greencoat UK Wind PLC ORD 1P	5.50	129
InfraRed Capital Partners - The Renewables Infrastructure Group ORD NPV GBP	5.50	129
John Laing Capital Management - JLEN Environmental Assets Group Limited Ord NPV	5.50	118
VT - Gravis Clean Energy Income C Acc GBP	5.50	123
Alquity - Asia Y GBP	5.00	118
FP - Carmignac Emerging Markets A Acc	5.00	132
Impax Asset Mgt - Impax Environmental Markets Ord 10P	5.00	154
Premier Miton - Responsible UK Equity C Inc GBP	5.00	105
WS - Montanaro Better World A Acc	4.50	141
Ninety One - Global Environment J Acc GBP	4.50	117
abrdn - Europe ex UK Ethical Equity Institutional Acc GBP	4.00	130
Aegon - Ethical Corporate Bond B Acc	4.00	60
Baillie Gifford - Positive Change B Inc	4.00	152
Brown Advisory - Global Sustainable Total Return Bond (GBP) Sterling Class B Acc GBP	4.00	
JOHCM - Regnan Global Equity Impact Solutions F Acc	4.00	114
Liontrust - Sustainable Future European Growth 2 Acc	4.00	137
Rathbone - Ethical Bond Fund I Acc GBP	4.00	52
Remaining 2 holdings	7.00	-

## Diversification Benefit

Current Portfolio Risk Score

85

Weighted Risk Score of Holdings

118

Diversification Benefit

28%



As a portfolio's risk increases, a high diversification benefit becomes more difficult to achieve as the portfolio necessarily becomes concentrated in higher risk and higher correlated investments.

What may be considered high or low diversification benefits are therefore dependent on the overall portfolio risk.

# LWM Balanced Positive Impact Portfolio - Aug 14

## Portfolio Summary

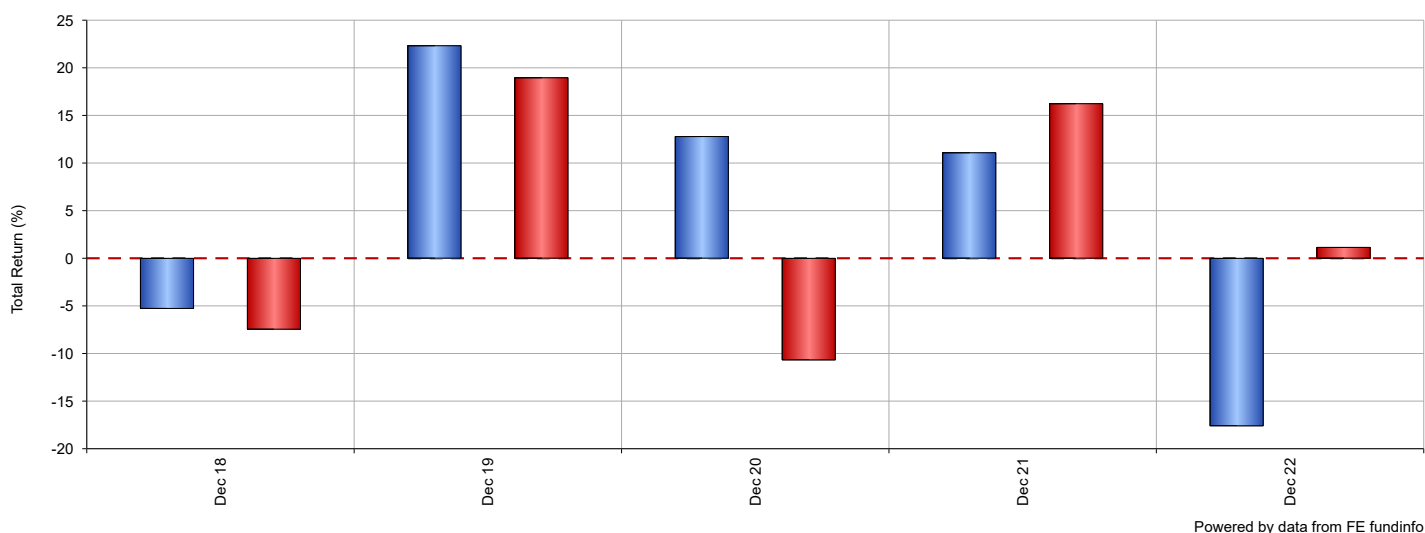
The following tables and charts illustrate the overall performance of the portfolio against its benchmark. The cumulative chart illustrates the overall performance over a maximum of five years dependant on the age of the portfolio and the table shows the overall performance broken down into specified periods. The discrete table and chart illustrates how the portfolio has performed against the benchmark during whole calendar years. All performance is to the latest month end and in GBP.

### Cumulative Performance



Name	3 mths	6 mths	1 yr	3 yrs	5 yrs
■ LWM Balanced Positive Impact Portfolio - Aug 14	-4.67	-4.33	-2.97	-4.90	10.22
■ Benchmark - LWM Balanced Positive Impact Portfolio Benchmark - Sep 03	1.53	1.61	14.97	38.31	20.66

### Discrete Calendar Year Performance

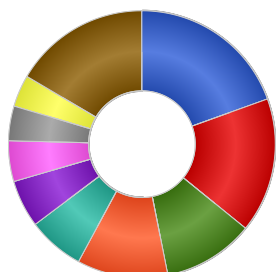


Name	2018	2019	2020	2021	2022
■ LWM Balanced Positive Impact Portfolio - Aug 14	-5.28	22.33	12.80	11.09	-17.60
■ Benchmark - LWM Balanced Positive Impact Portfolio Benchmark - Sep 03	-7.46	18.97	-10.68	16.24	1.15

# LWM Balanced Positive Impact Portfolio - Aug 14 Portfolio Breakdown

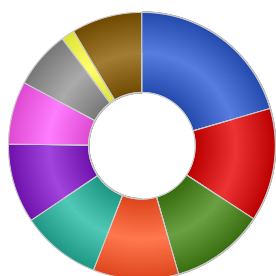
This report illustrates how the portfolio is allocated across asset classes, industrial sectors and major world regions as well as the underlying aggregated portfolio stock holdings.

## Asset Allocation



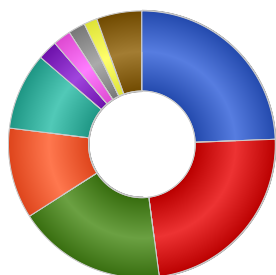
Name	% Weight
North American Equities	19.45
European Equities	16.30
Undisclosed	11.00
UK Equities	10.97
Commodity & Energy	6.84
Asia Pacific Emerging Equities	5.73
Asia Pacific Equities	4.92
Global Fixed Interest	4.17
Equities	3.87
Other	16.47

## Sector Allocation



Name	% Weight
Undisclosed	20.50
Telecom, Media & Technology	13.72
Industrials	11.35
Utilities	10.35
Financials	9.66
Consumer Products	9.62
Health Care	7.63
Basic Materials	6.97
Insurance	1.66
Others	8.54

## Region Allocation



Name	% Weight
North America	24.39
UK	23.52
Europe ex UK	18.03
Undisclosed	11.00
Pacific Basin	9.34
Continental Europe	2.40
Money Market	2.14
Americas	2.07
Asia Pacific	1.61
Other	5.48

## Top 10 Stock Holdings

Name	% Weight
UNDISCLOSED	16.50
ASML HOLDING N.V.	0.80
NEXTERA ENERGY INC	0.75
TAIWAN SEMICONDUCTOR MANUFACTURING CO. LTD.	0.67
MICROSOFT CORP	0.62
TAIWAN SEMICONDUCTOR CO	0.54
SSE PLC	0.49
ENEL - SPA	0.48
GREENCOAT UK WIND PLC ORD 1P	0.43
TENCENT HOLDINGS LIMITED	0.40

# LWM Balanced Positive Impact Portfolio - Aug 14 Ratio Analysis (3 yrs)

This report displays some key ratio information for your portfolio and holdings to help demonstrate their over or under performance against the benchmark and risk. All data is to the latest month end and in GBP.

Ratios						
Portfolio Holdings	% Weight	Volatility	Alpha	Beta	Downside Capture	Upside Capture
Ecofin Advisors Limited - Ecofin Global Utilities and Infrastructure Trust Plc ORD 1P	8.00	19.44	-2.39	0.76	85.09	54.74
FTGF - ClearBridge US Equity Sustainability Leaders S Acc GBP	6.00	14.01	1.00	0.62	72.38	60.70
Greencoat Capital LLP - Greencoat UK Wind PLC ORD 1P	5.50	14.56	6.05	0.16	-6.23	22.36
InfraRed Capital Partners - The Renewables Infrastructure Group ORD NPV GBP	5.50	12.38	-2.95	0.08	50.69	7.45
John Laing Capital Management - JLEN Environmental Assets Group Limited Ord NPV	5.50	13.14	-1.78	0.23	36.70	12.60
VT - Gravis Clean Energy Income C Acc GBP	5.50	12.23	-5.46	0.36	30.90	2.60
Alquity - Asia Y GBP	5.00	15.92	-5.54	0.48	23.51	3.07
FP - Carmignac Emerging Markets A Acc	5.00	17.21	-4.73	0.54	28.72	9.68
Impax Asset Mgt - Impax Environmental Markets Ord 10P	5.00	21.81	-4.32	0.79	50.38	27.24
Premier Miton - Responsible UK Equity C Inc GBP	5.00	15.75	-8.84	0.97	137.46	71.62
WS - Montanaro Better World A Acc	4.50	20.47	-5.91	0.49	68.92	15.93
Ninety One - Global Environment J Acc GBP	4.50	17.02	-1.14	0.61	71.50	46.77
abrdn - Europe ex UK Ethical Equity Institutional Acc GBP	4.00	17.81	-11.75	1.10	152.22	72.92
Aegon - Ethical Corporate Bond B Acc	4.00	8.65	-9.37	0.38	85.91	11.31
Baillie Gifford - Positive Change B Inc	4.00	22.38	-6.34	0.73	58.92	19.27
Brown Advisory - Global Sustainable Total Return Bond (GBP) Sterling Class B Acc GBP	4.00	n/a	n/a	n/a	n/a	n/a
JOHCM - Regnan Global Equity Impact Solutions F Acc	4.00	n/a	n/a	n/a	n/a	n/a
Liontrust - Sustainable Future European Growth 2 Acc	4.00	19.02	-15.17	1.15	170.08	69.19
Rathbone - Ethical Bond Fund I Acc GBP	4.00	8.70	-8.52	0.45	86.31	17.84
Sarasin - Responsible Global Equity P Acc	4.00	11.49	-3.65	0.68	67.38	40.08
Royal London - Sustainable Leaders Trust C Acc	3.00	13.49	-2.00	0.81	101.23	75.30
<b>Total Portfolio</b>	<b>100.00</b>	<b>11.16</b>	<b>-7.56</b>	<b>0.58</b>	<b>86.18</b>	<b>27.14</b>

# LWM Balanced Positive Impact Portfolio - Aug 14 Ratio Analysis (3 yrs)

## **Volatility**

Standard deviation is a statistical measurement which, when applied to an investment fund, expresses its volatility, or risk. It shows how widely a range of returns varied from the fund's average return over a particular period.

## **Alpha**

Alpha is a measure of a fund's over- or under-performance by comparison to its benchmark. It represents the return of the fund when the benchmark is assumed to have a return of zero, and thus indicates the extra value that the manager's activities have contributed.

## **Beta**

Beta is a statistical estimate of a fund's volatility by comparison to that of its benchmark, i.e. how sensitive the fund is to movements in the section of the market that comprises the benchmark.

## **Downside Capture**

Downside Capture Ratio measures a manager's performance in down markets relative to the market (benchmark) itself. It is calculated by taking the security's downside capture return and dividing it by the benchmark's downside capture return.

## **Upside Capture**

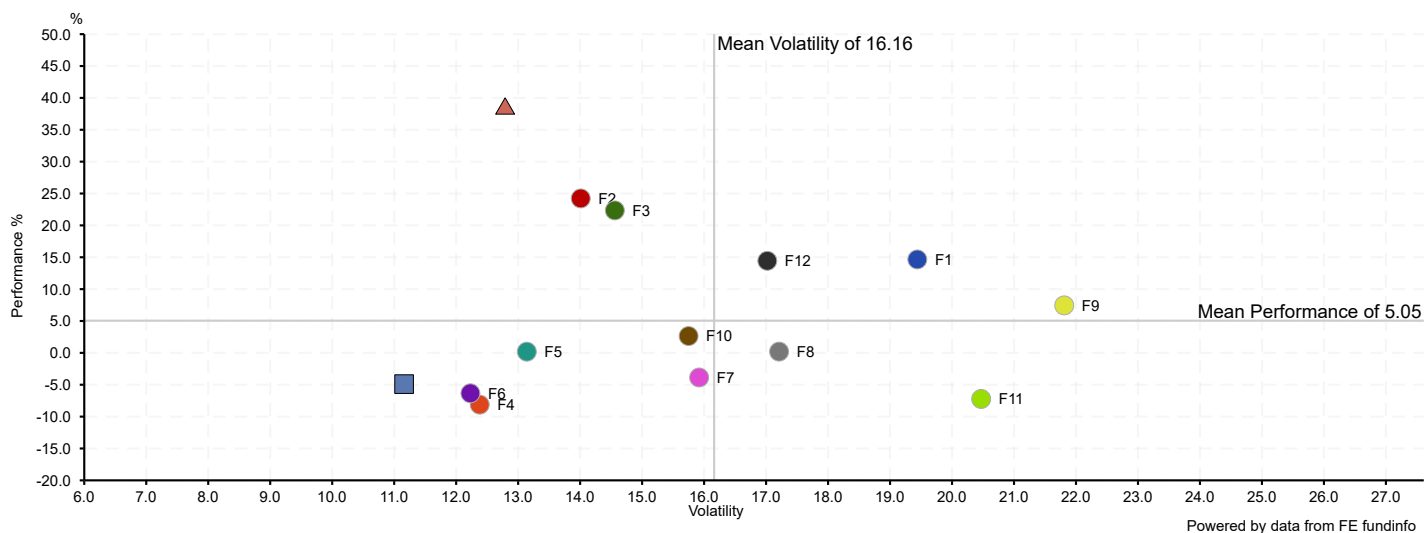
Upside Capture Ratio measures a manager's performance in up markets relative to the market (benchmark) itself. It is calculated by taking the security's upside capture return and dividing it by the benchmark's upside capture return.

# LWM Balanced Positive Impact Portfolio - Aug 14

## Risk & Return (3 yrs)

The scatter chart and table illustrate the risk, represented by volatility, of your portfolio holdings, the portfolio itself and its benchmark against return, represented by performance. The chart will return performance and volatility over three years to latest month end and in GBP.

### Risk & Return Chart of Top Portfolio Holdings



### Risk & Return Table of Top Portfolio Holdings

Portfolio Holdings	% Weight	Performance 3 yrs	Volatility 3 yrs
● F1 Ecofin Advisors Limited - Ecofin Global Utilities and Infrastructure Trust Plc ORD 1P	8.00	14.66	19.44
● F2 FTGF - ClearBridge US Equity Sustainability Leaders S Acc GBP	6.00	24.23	14.01
● F3 Greencoat Capital LLP - Greencoat UK Wind PLC ORD 1P	5.50	22.35	14.56
● F4 InfraRed Capital Partners - The Renewables Infrastructure Group ORD NPV GBP	5.50	-8.12	12.38
● F5 John Laing Capital Management - JLEN Environmental Assets Group Limited Ord NPV	5.50	0.19	13.14
● F6 VT - Gravis Clean Energy Income C Acc GBP	5.50	-6.34	12.23
● F7 Alquity - Asia Y GBP	5.00	-3.86	15.92
● F8 FP - Carmignac Emerging Markets A Acc	5.00	0.20	17.21
● F9 Impax Asset Mgt - Impax Environmental Markets Ord 10P	5.00	7.45	21.81
● F10 Premier Miton - Responsible UK Equity C Inc GBP	5.00	2.64	15.75
● F11 WS - Montanaro Better World A Acc	4.50	-7.23	20.47
● F12 Ninety One - Global Environment J Acc GBP	4.50	14.44	17.02
■ <b>Total Portfolio</b>		<b>-4.90</b>	<b>11.16</b>
▲ <b>Benchmark - LWM Balanced Positive Impact Portfolio Benchmark - Sep 03</b>		<b>38.31</b>	<b>12.79</b>

# LWM Balanced Positive Impact Portfolio - Aug 14

## Portfolio Composition

This report displays some key information regarding holdings within your portfolio, such as fees and maintenance charges.

Composition								
Portfolio Holdings	% Weight	Clean Share	AMC	TER	OCF	FMF	Fund Size	Fund Size Currency
Ecofin Advisors Limited - Ecofin Global Utilities and Infrastructure Trust Plc ORD 1P	8.00	✗	1.25%	-	1.43%	-	174.35M	GBP
FTGF - ClearBridge US Equity Sustainability Leaders S Acc GBP	6.00	✓	0.40%	-	0.50%	-	1,456.64M	GBP
Greencoat Capital LLP - Greencoat UK Wind PLC ORD 1P	5.50	✗	-	-	1.03%	-	3,037.51M	GBP
InfraRed Capital Partners - The Renewables Infrastructure Group ORD NPV GBP	5.50	✓	0.97%	-	0.88%	-	2,494.28M	GBP
John Laing Capital Management - JLEN Environmental Assets Group Limited Ord NPV	5.50	✗	-	-	1.24%	-	629.78M	GBP
VT - Gravis Clean Energy Income C Acc GBP	5.50	✓	0.80%	-	1.32%	-	470.13M	GBP
Alquity - Asia Y GBP	5.00	✓	0.90%	-	1.55%	-	26.34M	GBP
FP - Carmignac Emerging Markets A Acc	5.00	✓	0.87%	-	0.95%	-	25.69M	GBP
Impax Asset Mgt - Impax Environmental Markets Ord 10P	5.00	✓	0.73%	-	0.81%	-	1,042.10M	GBP
Premier Miton - Responsible UK Equity C Inc GBP	5.00	✓	0.75%	-	0.91%	-	149.48M	GBP
WS - Montanaro Better World A Acc	4.50	✓	0.85%	-	1.00%	-	98.56M	GBP
Ninety One - Global Environment J Acc GBP	4.50	✓	0.65%	-	0.76%	-	1,832.20M	GBP
abrdn - Europe ex UK Ethical Equity Institutional Acc GBP	4.00	✓	0.75%	-	0.85%	-	203.72M	GBP
Aegon - Ethical Corporate Bond B Acc	4.00	✓	0.45%	-	0.47%	-	426.00M	GBP
Baillie Gifford - Positive Change B Inc	4.00	✓	0.50%	-	0.53%	-	2,224.91M	GBP
Brown Advisory - Global Sustainable Total Return Bond (GBP) Sterling Class B Acc GBP	4.00	✓	0.45%	-	0.67%	-	278.66M	GBP
JOHCM - Regnan Global Equity Impact Solutions F Acc	4.00	✓	0.25%	-	0.35%	-	131.14M	GBP
Liontrust - Sustainable Future European Growth 2 Acc	4.00	✓	0.75%	-	0.87%	-	249.14M	GBP
Rathbone - Ethical Bond Fund I Acc GBP	4.00	✓	0.63%	-	0.66%	-	2,037.62M	GBP
Sarasin - Responsible Global Equity P Acc	4.00	✓	0.75%	-	0.95%	-	369.26M	GBP
Royal London - Sustainable Leaders Trust C Acc	3.00	✓	0.75%	-	0.76%	0.75%	3,068.89M	GBP
<b>Total Portfolio</b>	<b>100.00</b>				<b>^0.91%</b>			

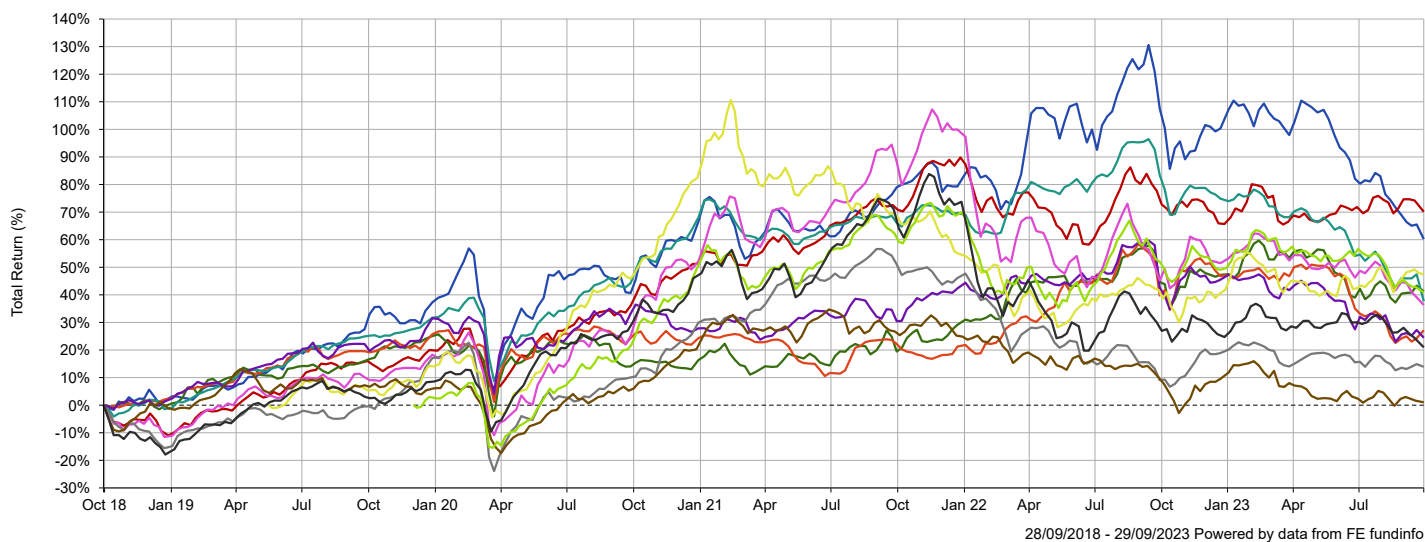
<sup>^</sup>Portfolio Expense - The portfolio expense is calculated using the weighted value of the Ongoing Costs Ex Ante of the portfolio constituents. Where the Ongoing Costs Ex Ante is not available the OCF is used, and where this is not available the TER is used. If an underlying instrument has no Ongoing Costs Ex Ante or OCF or TER figure, the portfolio expense cannot be calculated.



# LWM Balanced Positive Impact Portfolio - Aug 14 Holding Performance (Cumulative)

This report illustrates the cumulative performance of the top holdings by percentage weighting of your portfolio. All performance is to the latest month end and in GBP.

## Cumulative Performance Chart of Top Portfolio Holdings



## Cumulative Performance Table of Top Portfolio Holdings

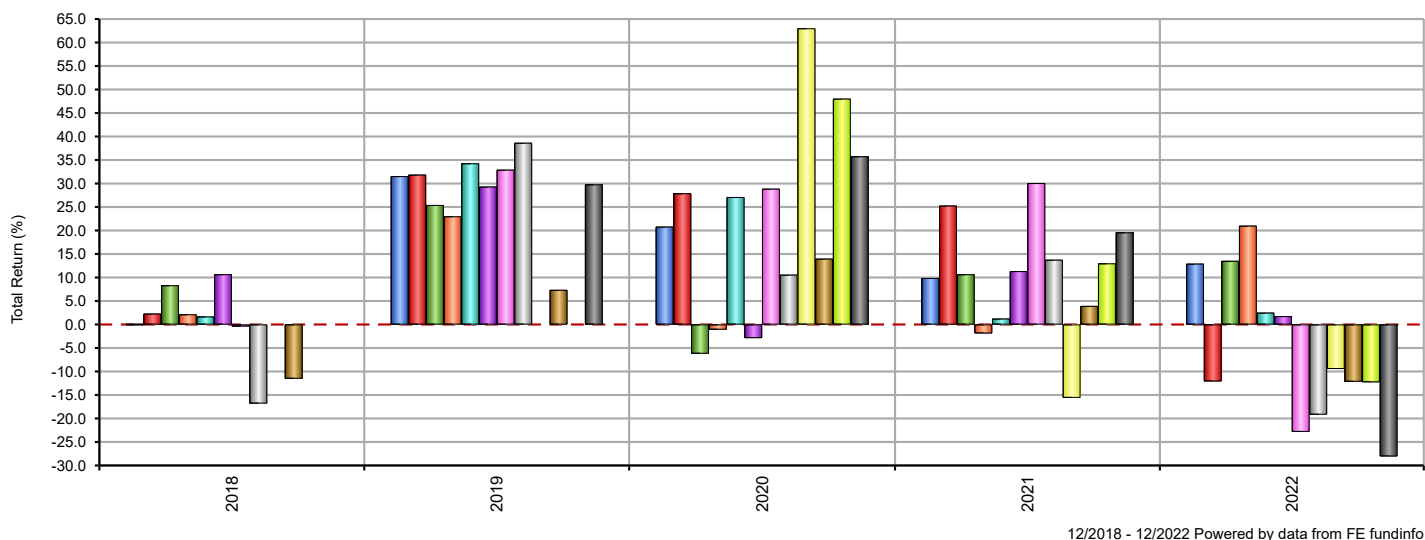
Portfolio Holdings	% Weight	3 mths	6 mths	1 yr	3 yrs	5 yrs
■ Ecofin Advisors Limited - Ecofin Global Utilities and Infrastructure Trust Plc ORD 1P	8.00	-11.64	-21.51	-21.95	14.66	60.22
■ FTGF - ClearBridge US Equity Sustainability Leaders S Acc GBP**	6.00	-1.82	-0.59	0.86	24.23	70.12
■ Greencoat Capital LLP - Greencoat UK Wind PLC ORD 1P	5.50	-1.47	-8.07	-1.91	22.35	41.24
■ John Laing Capital Management - JLEN Environmental Assets Group Limited Ord NPV	5.50	-5.00	-14.51	-11.56	0.19	27.15
■ VT - Gravis Clean Energy Income C Acc GBP	5.50	-10.90	-18.99	-23.20	-6.34	37.68
■ InfraRed Capital Partners - The Renewables Infrastructure Group ORD NPV GBP	5.50	-5.68	-12.00	-11.26	-8.12	24.45
■ Impax Asset Mgt - Impax Environmental Markets Ord 10P	5.00	-9.13	-13.05	-5.39	7.45	36.33
■ Premier Miton - Responsible UK Equity C Inc GBP	5.00	-1.66	-0.91	6.04	2.64	13.90
■ FP - Carmignac Emerging Markets A Acc	5.00	3.71	0.36	7.47	0.20	n/a
■ Alquity - Asia Y GBP**	5.00	-1.07	-7.51	-4.63	-3.86	1.03
■ Ninety One - Global Environment J Acc GBP**	4.50	-10.38	-11.13	-4.72	14.44	n/a
■ WS - Montanaro Better World A Acc	4.50	-7.84	-6.48	-4.30	-7.23	20.97
<b>Total Portfolio</b>		<b>-4.67</b>	<b>-4.33</b>	<b>-2.97</b>	<b>-4.90</b>	<b>10.22</b>

\*\* The history of this unit/share class has been extended, at FE fundinfo's discretion, to give a sense of a longer track record of the fund as a whole.

# LWM Balanced Positive Impact Portfolio - Aug 14 Holding Performance (Discrete Calendar Year)

This report illustrates the discrete performance of the top holdings by percentage weighting of your portfolio in whole calendar years and in GBP.

## Discrete Calendar Year Chart of Top Portfolio Holdings



## Discrete Calendar Year Table of Top Portfolio Holdings

Portfolio Holdings	% Weight	2018	2019	2020	2021	2022
■ Ecofin Advisors Limited - Ecofin Global Utilities and Infrastructure Trust Plc ORD 1P	8.00	-0.01	31.56	20.81	9.87	12.93
■ FTGF - ClearBridge US Equity Sustainability Leaders S Acc GBP**	6.00	2.31	31.87	27.90	25.29	-12.10
■ Greencoat Capital LLP - Greencoat UK Wind PLC ORD 1P	5.50	8.33	25.41	-6.20	10.67	13.53
■ John Laing Capital Management - JLEN Environmental Assets Group Limited Ord NPV	5.50	2.15	23.01	-1.08	-1.88	21.02
■ VT - Gravis Clean Energy Income C Acc GBP	5.50	1.69	34.29	27.11	1.24	2.51
■ InfraRed Capital Partners - The Renewables Infrastructure Group ORD NPV GBP	5.50	10.68	29.33	-2.88	11.34	1.76
■ Impax Asset Mgt - Impax Environmental Markets Ord 10P	5.00	-0.42	32.92	28.88	30.08	-22.83
■ Premier Miton - Responsible UK Equity C Inc GBP	5.00	-16.81	38.66	10.58	13.77	-19.17
■ FP - Carmignac Emerging Markets A Acc	5.00	n/a	n/a	63.02	-15.59	-9.45
■ Alquity - Asia Y GBP**	5.00	-11.52	7.36	13.99	3.94	-12.17
■ Ninety One - Global Environment J Acc GBP**	4.50	n/a	n/a	48.04	12.99	-12.28
■ WS - Montanaro Better World A Acc	4.50	n/a	29.80	35.78	19.59	-28.06
<b>Total Portfolio</b>		<b>-5.28</b>	<b>22.33</b>	<b>12.80</b>	<b>11.09</b>	<b>-17.60</b>

\*\* The history of this unit/share class has been extended, at FE fundinfo's discretion, to give a sense of a longer track record of the fund as a whole.

# LWM Balanced Positive Impact Portfolio - Aug 14 ESG Rating Analysis

This report shows the ESG ratings available for the portfolio holdings to provide a view of the Environmental, Social and Governance impact of these investments and allow analysis as to how these align with the overall investment objectives and desired values.

## ESG Rating Analysis

Portfolio Holdings	% Weight	ISS ESG Fund Rating Stars‡
Ecofin Advisors Limited - Ecofin Global Utilities and Infrastructure Trust Plc ORD 1P	8.00	-
FTGF - ClearBridge US Equity Sustainability Leaders S Acc GBP	6.00	-
Greencoat Capital LLP - Greencoat UK Wind PLC ORD 1P	5.50	-
InfraRed Capital Partners - The Renewables Infrastructure Group ORD NPV GBP	5.50	-
John Laing Capital Management - JLEN Environmental Assets Group Limited Ord NPV	5.50	-
VT - Gravis Clean Energy Income C Acc GBP	5.50	-
Alquity - Asia Y GBP	5.00	★★★★★
FP - Carmignac Emerging Markets A Acc	5.00	★★★★★
Impax Asset Mgt - Impax Environmental Markets Ord 10P	5.00	★★★★★
Premier Miton - Responsible UK Equity C Inc GBP	5.00	★★★★★
WS - Montanaro Better World A Acc	4.50	★★★★★
Ninety One - Global Environment J Acc GBP	4.50	★★★★★
abrdn - Europe ex UK Ethical Equity Institutional Acc GBP	4.00	★★★★★
Aegon - Ethical Corporate Bond B Acc	4.00	★★★★★
Baillie Gifford - Positive Change B Inc	4.00	★★★★★
Brown Advisory - Global Sustainable Total Return Bond (GBP) Sterling Class B Acc GBP	4.00	-
JOHCM - Regnan Global Equity Impact Solutions F Acc	4.00	★★★★★
Liontrust - Sustainable Future European Growth 2 Acc	4.00	★★★★★
Rathbone - Ethical Bond Fund I Acc GBP	4.00	-
Sarasin - Responsible Global Equity P Acc	4.00	★★★★★
Royal London - Sustainable Leaders Trust C Acc	3.00	★★★★★
Total Portfolio	100.00	-

‡ Data Provided by ISS ESG.

### ISS ESG Fund Rating Stars

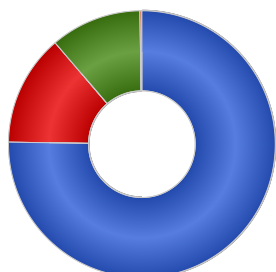
The fund's overall star rating is based on the fund's relative performance in comparison to peer funds in the same Lipper Global Classification class. The rating is derived from a weighted average ESG Performance Score which evaluates issuers across environmental, social, and governance performance metrics. The overall rating is graded on a scale from 1 (worst) to 5 (best).

# LWM Balanced Positive Impact Portfolio - Aug 14

## FinaMetrica Portfolio Asset Allocation by Holding

This report illustrates the contribution of the individual portfolio holdings to the overall portfolio asset allocation.

### FinaMetrica Asset Allocation



Name	% Weight
Growth	75.03
Defensive	13.46
Undisclosed	11.00
Unclassified	0.23

### FinaMetrica Portfolio Asset Breakdown by Individual Holdings

Portfolio Holdings	Growth (%)	Defensive (%)	Undisclosed (%)	Unclassified (%)
Ecofin Advisors Limited - Ecofin Global Utilities and Infrastructure Trust Plc ORD 1P	8.00	-	-	-
FTGF - ClearBridge US Equity Sustainability Leaders S Acc GBP	5.66	0.34	-	-
Greencoat Capital LLP - Greencoat UK Wind PLC ORD 1P	-	-	5.50	-
InfraRed Capital Partners - The Renewables Infrastructure Group ORD NPV GBP	5.50	-	-	-
John Laing Capital Management - JLEN Environmental Assets Group Limited Ord NPV	-	-	5.50	-
VT - Gravis Clean Energy Income C Acc GBP	5.46	0.04	-	-
Alquity - Asia Y GBP	4.89	0.11	-	-
FP - Carmignac Emerging Markets A Acc	4.53	0.47	-	-
Impax Asset Mgt - Impax Environmental Markets Ord 10P	4.90	0.10	-	-
Premier Miton - Responsible UK Equity C Inc GBP	4.71	0.29	-	-
WS - Montanaro Better World A Acc	4.40	0.10	-	-
Ninety One - Global Environment J Acc GBP	4.44	0.06	-	-
abrdn - Europe ex UK Ethical Equity Institutional Acc GBP	3.92	0.07	-	-
Aegon - Ethical Corporate Bond B Acc	-	3.96	-	0.04
Baillie Gifford - Positive Change B Inc	3.96	0.04	-	-
Brown Advisory - Global Sustainable Total Return Bond (GBP) Sterling Class B Acc GBP	-	3.54	-	0.19
JOHCM - Regnan Global Equity Impact Solutions F Acc	3.86	0.14	-	-
Liontrust - Sustainable Future European Growth 2 Acc	3.97	0.03	-	-
Rathbone - Ethical Bond Fund I Acc GBP	-	4.00	-	-
Sarasin - Responsible Global Equity P Acc	3.87	0.13	-	-
Royal London - Sustainable Leaders Trust C Acc	2.95	0.05	-	-
<b>Total Portfolio</b>	<b>75.03</b>	<b>13.46</b>	<b>11.00</b>	<b>0.23</b>